

LEMAN 

Welcome to LEMAN
2016

Our History

Welcome to more than 115 years of expertise



PAUL LEHMANN
INTERNATIONALE TRANSPORTER

- 1900 The company Paul Lehmann was founded in Copenhagen
- 1971 LEMAN USA was founded
- 1973 Change of name to LEMAN
- 1987 LEMAN Sweden was founded
- 2001 LEMAN Norway was founded
- 2006 LEMAN Finland was founded
- 2010 LEMAN UK was founded

KA 65 022

A stronger LEMAN through organic growth and exciting acquisitions



May 2012

- Acquisition of Otto Hansen & Co, Denmark with 55 empl.

September 2014

- Acquisition of Dan Cargo in Denmark, Sweden and Norway with aprox 100 empl.

April 2015

- USA expanding with new branch in Miami Florida

July 2015

- Acquisition of RSH Freight Masters and subsidiary PRINCIPAL Freight

August 2015

- Opening of new Turku branch in Finland

October 2015

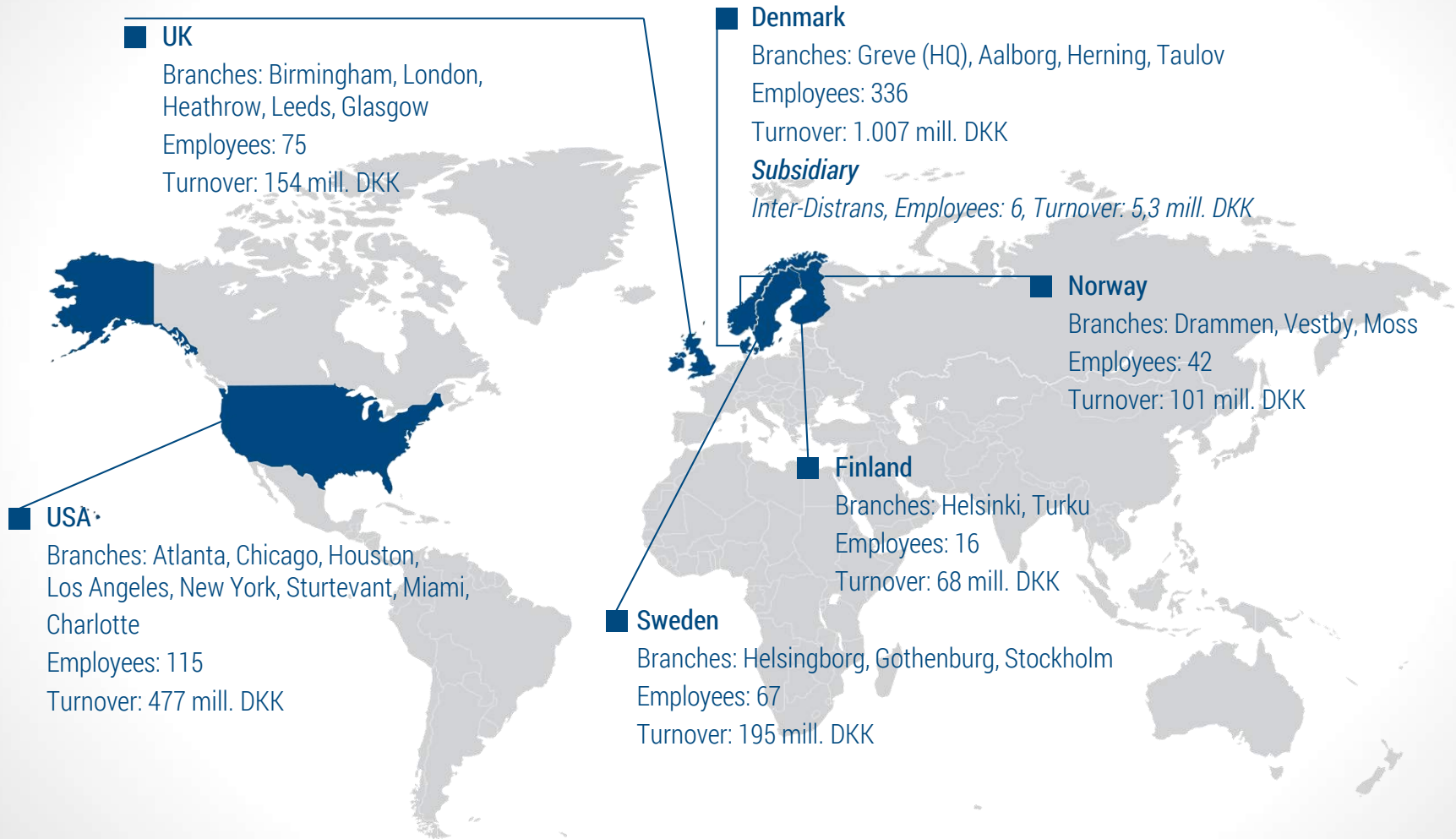
- Acquisition of Dalpa International in UK with 30 empl.

October 2016

- Opening of new branch in Charlotte, North Carolina



Around the world with LEMAN



LEMAN has partners in over 100 countries

LEMAN TODAY



- Present in 6 countries with 25 branches
- More than 700 employees
- Partners in over 100 countries
- Independent and financially sound
- Development and expansion towards the best logistics solutions

YOUR PERSONAL LINK TO GLOBAL TRANSPORTATION AND LOGISTICS

Our Vision and Strategy



Return On Invest

LEMAN Group will deliver the Return On Invest in line with the management and shareholder expectations

Natural Alternative Choice

LEMAN Group shall be the natural alternative choice to the multinational logistic companies

Best-In-Class

LEMAN Group will provide a Best-In-Class working environment which fosters and attracts highly skilled and motivated members of staff

Full Product Range

LEMAN Group shall provide the full product range for all business segments with an outstanding operational excellence at market rates to all customers within the supply chain industry and strive for continuous improvements at any time

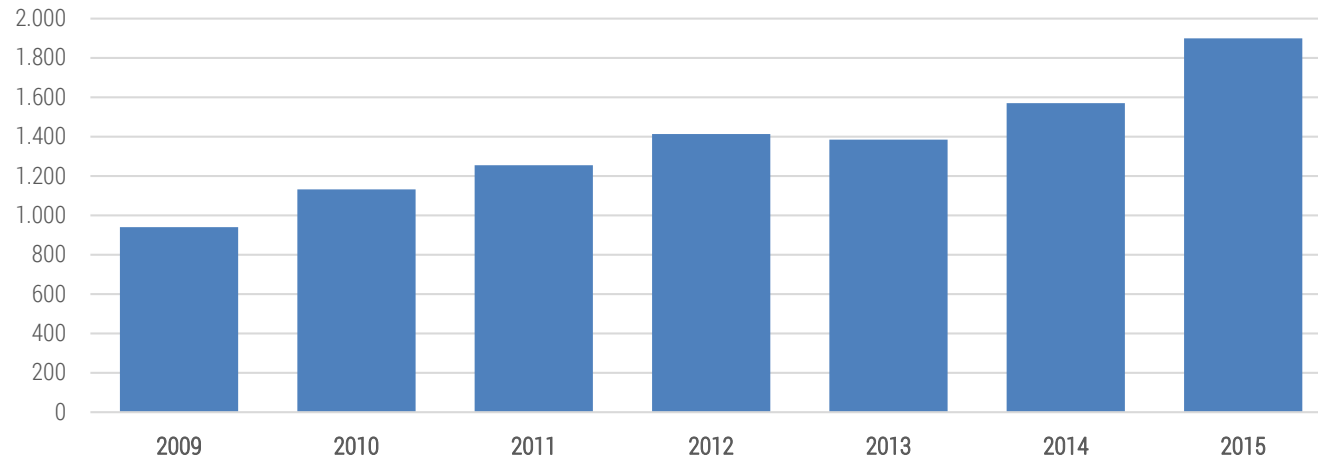
Over The Market Growth

LEMAN Group will focus on a sustainable over the market growth combined with strategic 'best fit' acquisitions within the existing LEMAN countries

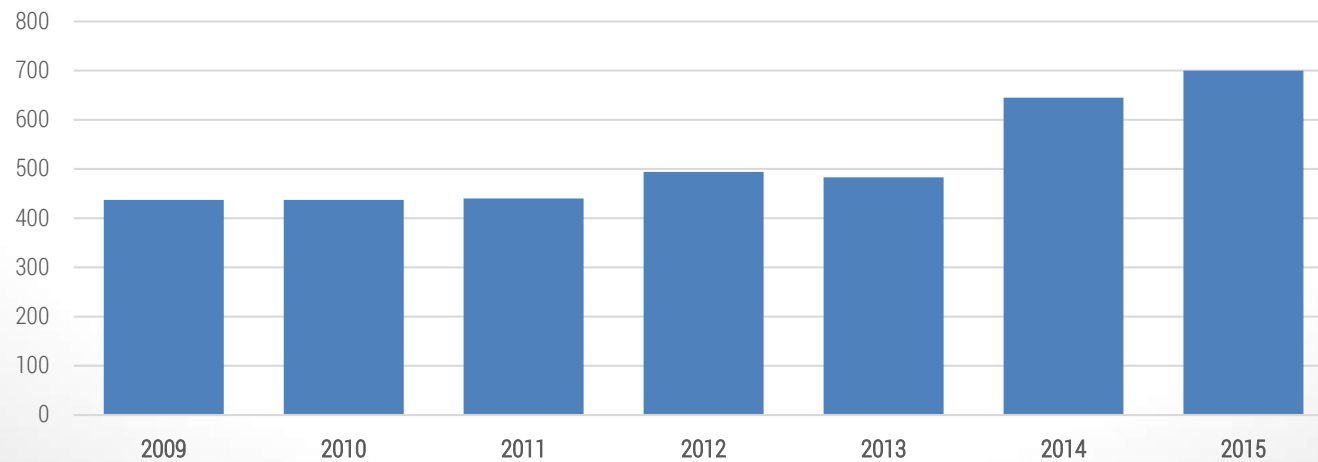
Financial Info



LEMAN Group - Turnover (Mio DKK)



LEMAN Group - No. of Employees

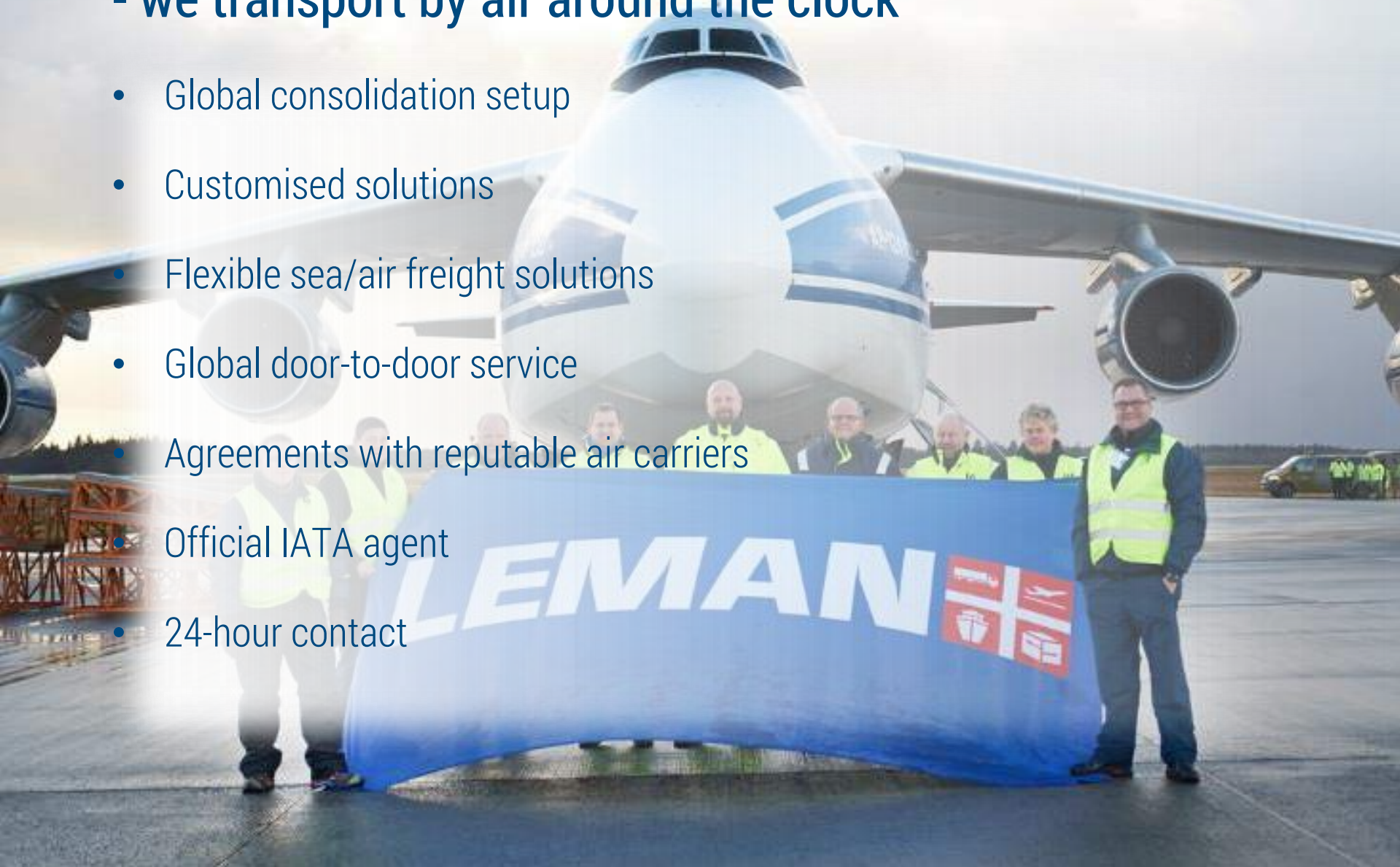


Air Freight

- we transport by air around the clock

- Global consolidation setup
- Customised solutions
- Flexible sea/air freight solutions
- Global door-to-door service
- Agreements with reputable air carriers
- Official IATA agent
- 24-hour contact

LEMAN 



Sea Freight

- regular and quick routes

- Global LCL setup
- Order/Shipment Management System
- FCL solutions
- Global network of agents
- Online container tracking
- Fast transit times via key ports
- Key Account Manager – your personal contact
- Agreements with key shipping companies

Road Transport

- direct by truck throughout Europe



- One of the strongest networks in Europe
- Independent, direct routes throughout Europe
- Regular departure days with short transit times
- Customised solutions
- Transport of packages, pallets and long-haul freight
- A range of ROAD products, incl. EveryDay and NextDay



Express and Packages

- we take good care of your packages

- Worldwide Express Service
- Worldwide Economy Service
- Package service within Denmark and Europe
- National Express
- Global network of trusted partners
- Online booking portal with price module
- Track & Trace

Logistics & Warehousing



- 62,000 m²/ 80,000 pallets logistics warehouses
 - incl. 24,000 m² high bay warehouse
- 10,000 m² terminal facilities
- Bonded warehouse facilities
- Temperature controlled storage
- Video surveillance
- Online warehouse
- FMCG – Pharmaceuticals – Electronics
- Quality Management Systems – HACCP - GDP



Pharma Healthcare

- how LEMAN meet your logistic needs



- Contract Logistics – road, air, sea and express
- Nordic gateway and global door to door coverage
- GDP compliant services and dedicated GDP educated pharma teams
- Strong experience, customer portfolio and references
- Dedicated pharma network
- Track & Trace and Temperature monitoring
- Cold chain +2 to +8, ambient +15 to +25 and dry ice

Temperature monitored trailer in front of LEMAN HQ

Project Transports - door-to-door Worldwide



- Project transport all over the world
- Project planning and consulting
- On-time guaranteed transport
- 24-hour contact
- Chartering
- Crane and lift operations
- All types of special freight

Transport of flight simulator from Florida to the the Danish Airforce



Added Values

- optimization of the value chain



LEMAN provides a complete transport and logistics solution together with all the additional services that complete the task.

- Co-packing
- Sales displays
- Preparations
- Cross trade services and 3PL
- Trade fair forwarding
- Exhibitions – worldwide network



Our Experience Can Help You - transportation made easy



- VAT Registration
- Customs Services / Customs Clearance
- Temporary Storage
- Fiscal Representation
- Insurance
- Certificates and Carnets
- Reporting and administrative services

LEMAN branch in Taulov, Denmark

CSR

Corporate Social Responsibility

- Focus on CO² emission
- Focus on Eco driving
- Energy efficiency
- Compliance with Code of Conduct
- Quality/Audits
- Transparent business agreements
- Managing & supporting our transport partners
- Safe & healthy work environment



The LEMAN Core Values



- **Quality**

We provide quality

We are competent

We communicate clearly

- **Solutions**

We are conscious of our customers needs

We seek solutions/alternatives

We are flexible

- **Responsibility**

We take responsibility

We take ownership

We establish/build trust

- **Commitment**

We never say no

We are committed

We offer personalized service

- **Focus**

We work with focus

We are effective

We develop our tools and products



LEMAN



LEMAN



Thank you

LEMAN trainees from Copenhagen